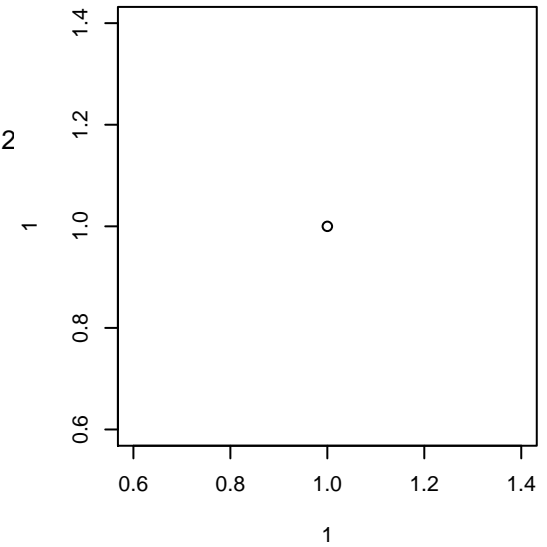


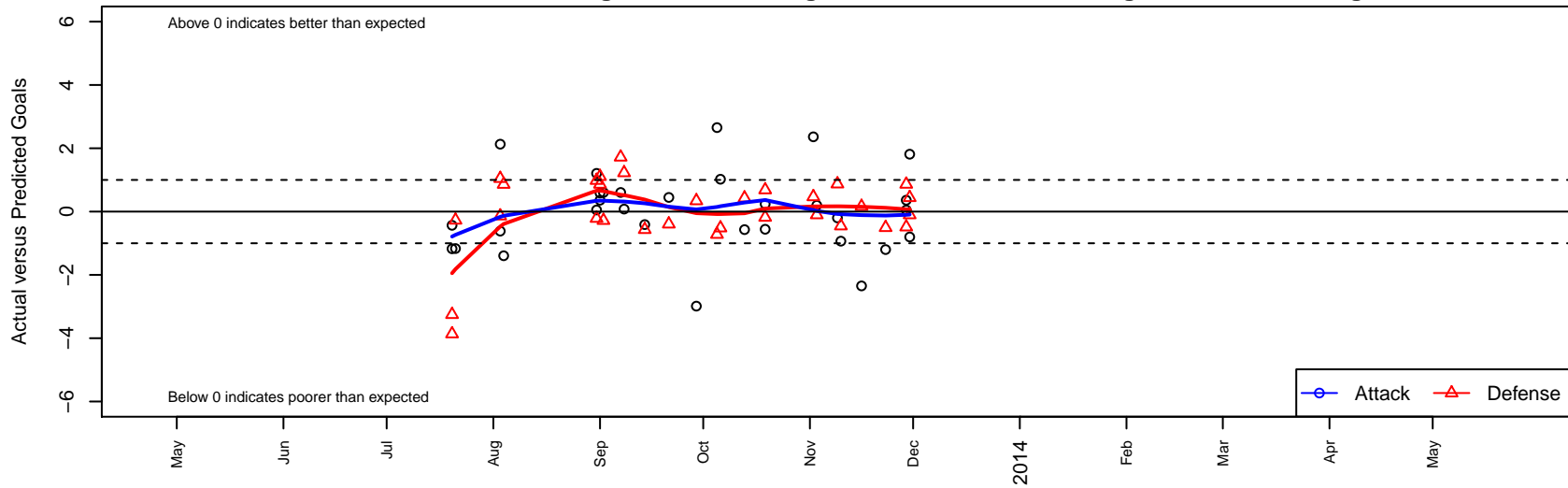
San Diego Surf SC Academy I G01

, CAS
 G01 total strength=1274
 attack=4.77 defense=5.6
 fall league = SCDL FI1 U12
 alt names used:
 SAN DIEGO SURF SOCCER SC WHITE (CAS)
 SD Surf Girls Academy I

Venues played:
 Albion Cup Showcase U12
 Surf Girls U12 U12
 Blues Cup Lime U12
 SCDL FI1 U12
 SoCal DL Fall Showcase Flight 1 (Flight 2) U12
 Surf Thanksgiving Gold U12



San Diego Surf SC Academy I G01
 Dots are actual minus expected GF (blue circles) and GA (red triangles).
 Blue line is smoothed change in attack strength. Red is smoothed change in defense strength.



	date	home		away		venue	pred.home	pred.awa
790	2013-11-30	San Diego Surf SC Academy I G01	4	Legends FC Black G01	0	Surf Thanksgiving Gold U12	2.19	0.44
798	2013-11-30	San Diego Surf SC Academy I G01	0	So Cal Blues Kale G01	1	Surf Thanksgiving Gold U12	0.80	0.90
758	2013-11-29	San Diego Surf SC Academy I G01	1	Strikers FC Cerritos A G01	1	Surf Thanksgiving Gold U12	0.95	0.51
759	2013-11-29	Arizona Arsenal 02 Premier G01	0	San Diego Surf SC Academy I G01	2	Surf Thanksgiving Gold U12	0.86	1.64
703	2013-11-23	Legends FC South G01	1	San Diego Surf SC Academy I G01	1	SCDL FI1 U12	0.49	2.20
630	2013-11-16	So Cal Athletic Stanwood G01	0	San Diego Surf SC Academy I G01	0	SCDL FI1 U12	0.16	2.35
560	2013-11-10	Laguna Hills Eclipse White G01	1	San Diego Surf SC Academy I G01	0	SCDL FI1 U12	0.55	0.93
528	2013-11-09	San Diego SC Academy Navy G01	0	San Diego Surf SC Academy I G01	1	SCDL FI1 U12	0.87	1.20
454	2013-11-03	San Diego Surf SC Academy I G01	1	So Cal Blues Kale G01	1	SCDL FI1 U12	0.80	0.90
400	2013-11-02	San Diego Surf SC Academy I G01	5	West Coast FC United Blue G01	0	SCDL FI1 U12	2.64	0.47
096	2013-10-19	Real So Cal White G01	0	San Diego Surf SC Academy I G01	1	SoCal DL Fall Showcase Flight 1 (Flight 2) U12	0.69	0.76
108	2013-10-19	Legends FC Gold G01	1	San Diego Surf SC Academy I G01	0	SoCal DL Fall Showcase Flight 1 (Flight 2) U12	0.82	0.56
971	2013-10-13	San Diego Surf SC Academy I G01	2	West Coast FC United G01	0	SCDL FI1 U12	2.57	0.43
819	2013-10-06	Arsenal FC South G01	1	San Diego Surf SC Academy I G01	3	SCDL FI1 U12	0.48	1.98
754	2013-10-05	San Diego Surf SC Academy I G01	6	Pateadores Irvine White G01	1	SCDL FI1 U12	3.35	0.28
623	2013-09-29	Slammers FC Maroon G01	0	San Diego Surf SC Academy I G01	1	SCDL FI1 U12	0.34	3.99
436	2013-09-21	San Diego Surf SC Academy I G01	2	Slammers FC G01	1	SCDL FI1 U12	1.55	0.60
270	2013-09-14	San Diego Surf SC Academy I G01	2	San Diego Surf SC Academy II G01	1	SCDL FI1 U12	2.41	0.43
161	2013-09-08	West Coast FC G01	0	San Diego Surf SC Academy I G01	1	SCDL FI1 U12	1.23	0.92
131	2013-09-07	San Diego Surf SC Academy I G01	1	So Cal Blues Baker G01	0	SCDL FI1 U12	0.40	1.72
010	2013-09-02	San Diego Surf SC Academy I G01	1	So Cal Blues Baker G01	2	Blues Cup Lime U12	0.40	1.72
992	2013-09-01	San Diego Surf SC Academy I G01	2	Arizona Arsenal 02 Premier G01	0	Blues Cup Lime U12	1.64	0.86
000	2013-09-01	San Diego Surf SC Academy I G01	1	USA Stars 02 A G01	0	Blues Cup Lime U12	0.41	1.11
965	2013-08-31	San Diego Surf SC Academy I G01	3	FC Golden State G01	1	Blues Cup Lime U12	2.95	0.79
967	2013-08-31	San Diego Surf SC Academy I G01	3	MVLA Avalanche Black G01	0	Blues Cup Lime U12	1.79	0.98
575	2013-08-04	San Diego Surf SC Academy I G01	0	Mustang Legends G01	0	Surf Girls U12 U12	1.39	0.86
531	2013-08-03	San Diego Surf SC Academy I G01	1	Leahi 02 Blue G01	1	Surf Girls U12 U12	1.62	0.86
533	2013-08-03	San Diego Surf SC Academy I G01	3	Real Colorado National G01	0	Surf Girls U12 U12	0.87	1.04

	date	home		away		venue	pred.home	pred.away
4286	2013-07-21	Hotspurs Premier G01	2	San Diego Surf SC Academy I G01	0	Albion Cup Showcase U12	1.73	1.17
4222	2013-07-20	Albion SC White G01	4	San Diego Surf SC Academy I G01	1	Albion Cup Showcase U12	0.75	2.17
4225	2013-07-20	Hawaii Rush 02 Nike G01	5	San Diego Surf SC Academy I G01	0	Albion Cup Showcase U12	1.14	0.43